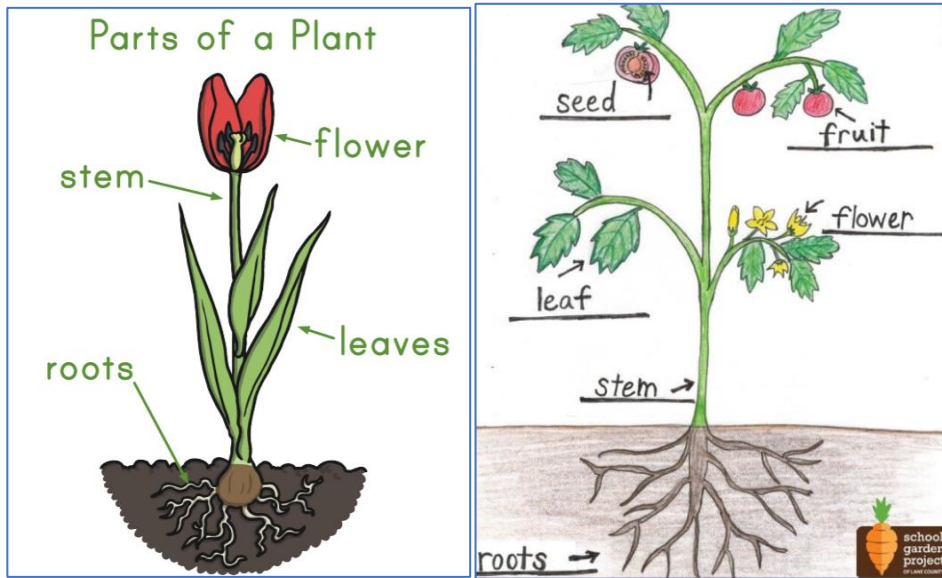




**Diagrams**



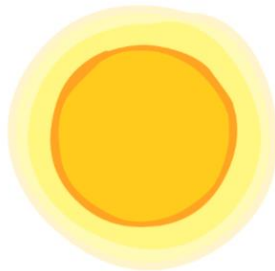
**Key Vocabulary**

<b>Leaf</b>	One of the usually green, flat parts of a plant or tree that grows from the stem or branch.
<b>Stem</b>	The stem is the main structure that supports leaves and flowers.
<b>Roots</b>	A root is a part of a plant that is usually hidden underground. They take water and food from the soil.
<b>Flower</b>	A flower is the part of a plant that blossoms. Flowers produce the seeds that can become new plants.
<b>Seed</b>	A seed contains a miniature plant, called an embryo, that can develop into a fully grown plant.
<b>Trunk</b>	The main stem of a tree.
<b>Fruit</b>	A fruit is the part of a flowering plant that contains the seeds.

**What a Plant Needs:**



Air  
 Light  
 Water  
 Nutrients  
 Warmth



**Sticky Knowledge**

We can eat lots of plants.

Plants need light and water to survive and grow.

