



# St Edmund's Catholic Primary School

EXECUTIVE HEAD - MRS BARLOW

ASSISTANT HEAD OF SCHOOL - MISS LYONS

Email: [office.stedmunds@cpswv.org](mailto:office.stedmunds@cpswv.org) Phone: 01986 892502

Website: [www.st-edmundsrc.suffolk.sch.uk](http://www.st-edmundsrc.suffolk.sch.uk)

8<sup>th</sup> November 2024

Jesus is clear; our first priority is to love God, second is to love our neighbour. Our assembly this week reminds children that Jesus wants us to love Him first, with all our hearts, minds and strength, not sometimes or by doing good things when we feel like it but first and always.



**"Love Him with all your heart, with all your understanding and strength, and to love your neighbour as yourself."**

**Mark 12:33**



We're working  
towards Artsmark  
Awarded by Arts  
Council England

Children will understand that:

- Jesus wants us to love God with all our heart, understanding and strength.
- Loving God first is the most important thing we can do.
- When we love God well, He helps us to love others well too.

A warm welcome back to everyone after our half term break, I hope you all had a lovely time and are well rested. We have lots to look forward to this half term as we approach the Christmas season. Keep a look out for key dates on the website and newsletter.

Thank you to all the parents of Beech class at St Benet's for your patience and understanding as we commence the ceiling repairs in the Early Years building. It was an unexpected 'surprise' but having Monday to make the move really helped us ensure we can continue to provide quality education for your children. Keep praying that the works will take no more than 5 weeks and we can move the children back to where they are most familiar. I want to give thanks to the staff in Beech Class for their determination and commitment this week to making sure the new room was ready for the children.

Our open mornings have been a success in both schools, however we continue to strive to grow the schools and welcome your support with this. If you know of any family looking for a small primary school with a family feel, please send them our way. We are happy to show parents around any time.

Thank you for your continued support.

Mrs Barlow

### **Breakfast club**

St Edmund's are asking for feedback from parents as to whether this is something you would use regularly. We have applied for some funding to support setting this up again but really need to be able to make it viable, have at least 10 children attending on a daily basis. If this is something you would definitely make use of please can you let the office know by Friday 15h November.

The funding may also stretch to after school care, so again if this is something you would use regularly please let us know.

### **Uniform**

A gentle reminder that we have a set school uniform for winter, which is in place now. This is shirt, tie, jumper or cardigan (blazer optional). Polo shirts should not be worn now as part of the main school uniform, with the exception of Reception children.

PE kits – Please only send your child in with the PE kit for the school. This should be t-shirt/polo shirt in school colour, hoody and shorts in school colour. In winter, they can wear plain joggers if it is too cold for shorts.



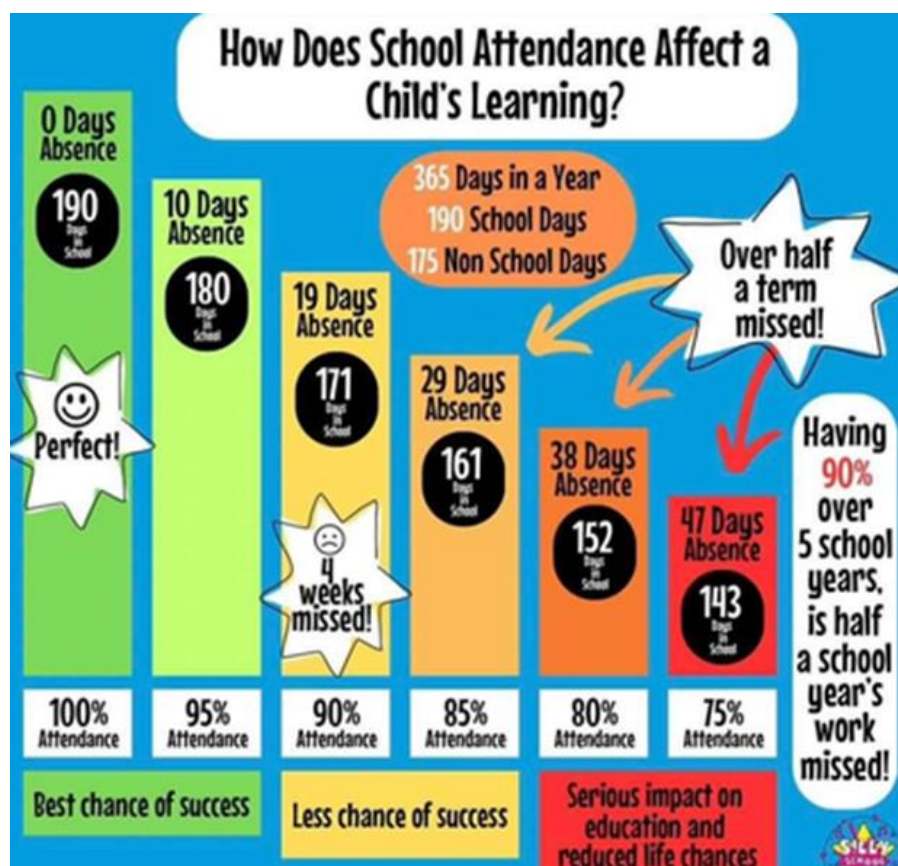
We're working  
towards Artsmark  
Awarded by Arts  
Council England

We are seeing more and more variation on this with children coming in dressed entirely in their own clothes.

If you need support with purchasing uniform because you access pupil premium, please let us know and we will be happy to purchase this for you. Otherwise, we have a selection of second hand uniform you can look through. Again just email the school office and they can sort a time for you to look through this.

## Attendance

Our goal this week is 96%. Well done to the classes that have achieved or excelled this.



Year Group	St Benet's	St Edmund's
R	96%	92%
1	95%	99%
2	95%	96%
3	93%	96%
4	96%	96%
5	86%	96%
6	89%	90%



## Forest School dates

9th January – Year 6

16th January – Year 5

6th February – Year 4

13th February – Year 3

27th February – Year 2

6th March – Year R and 1

13th March – Year R and 1



---

1st May – Year 4

8th May – Year 5

22nd May – Year 6

5th June – Year 3

12th June – Year 2

19th June – Year R and 1

26th June – Year R and 1

## Other upcoming dates

Tuesday 12<sup>th</sup> November – Crucial Crew trip year 6

*A national programme teaching Year 6 pupils about road and cycle safety, hand washing hygiene, fire safety, crime reduction and unknown substance awareness.*

Thursday 14<sup>th</sup> November – Additional PE day for Rowan and Oak classes

Tuesday 19<sup>th</sup> November – 2.30pm – Big Speech assembly

**Are the best things in life free?**

Wednesday 11<sup>th</sup> December – school Christmas lunch



# Heart of Gold



In Beech Class Teresa has received the Heart of Gold for the Value of Love (Friendship). Teresa has demonstrated that she is a good friend as she is kind, shares resources, is able to take turns and listens to her friends. Teresa also enjoys helping and supporting others. Well done Teresa.

This week in Rowan class our Heart of Gold for Love (friendship) goes to

Abi. This is because she is very kind and caring to her peers but also the younger children in school. She enjoys being a leader and making sure that they know where things are and shows them if not. Abi will play games with them and show them how to work as a team. She is thoughtful in class and always shares

meaningful answers when we are discussing our thoughts and feelings. Keep it up Abi!



This week Oak class Heart of Gold goes to Olive. Olive understands the term friendship. During this week's class assembly, Olive said that friendship comes from the heart and this cannot be truer for Olive. She treats everybody with respect in the classroom and is a great friend to have. We are so very proud of you!